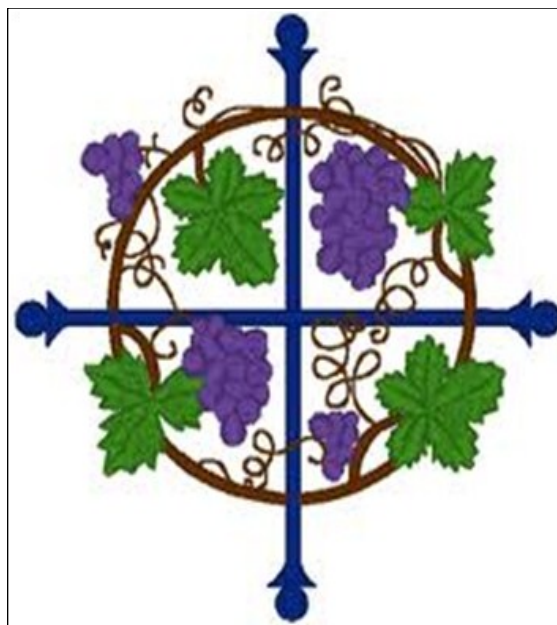


ST MATTHEW'S GRAPEVINE



PARISH OF ALBURY

FEBRUARY 2012

Fr Peter writes : *Dear People of St Matthew's*

Through all the changing scenes of life,
In trouble and in joy,
The praises of my God shall still
My heart and tongue employ.

Their drooping hearts were soon refreshed,
Who looked to Him for aid;
Desired success in every face,
A cheerful air displayed.

Fear Him, ye saints, and you will then
Have nothing else to fear;
Make you His service your delight;
Your wants shall be His care.

While hungry lions lack their prey,
The Lord will food provide
For such as put their trust in Him,
And see their needs supplied.



This Hymn, a paraphrase of Psalm 34 – “I will bless the Lord at all times, His praise shall continually be in my mouth”. Usually sung to the fine tune, “Wiltshire” was written by Sir George Smart (1776-1867) when he was only nineteen and Organist at St James’ Chapel London was a revolutionary new version of the Psalter produced in 1696 by Nahum Tate and Nicholas Brady. The collaboration between Tate and Brady also gave us “As pants the Hart and while shepherds watched their flocks”, Tate became Britain’s poet laureate and Brady Chaplain to King William II and Queen Anne. Their own lives saw considerable change and their work was at the time controversial.

This is a time of considerable change and some may I be controversial but working together today in 2012, as Tate and Brady did in the 17th century will give others something to sing about much later, well after the controversy has vanished.

Christmas at St Matthews was most memorable for the glory of the music, the record number of worshippers, as well as the vision of Bishop John almost mobbed by 4 year olds as he spoke at our services at Christmas Eve will charge many a person’s batteries for the year to come and give us courage to step out yet further in faith and there is so much to encourage us as we work together.

Thank you for the continuing and marvellous support for the transformation of the St Matthews forecourt and garden. **The Diamond Jubilee Pavilion** to be blessed by the Bishop and opened by the Governor of NSW on the 4th of March is the next wonderful step.

The Garden of reflection and remembrance around the Pavilion will provide opportunity to inter ashes of loved ones in the middle of the historic precinct of Central Albury and within the elegant and hopeful environment of Albury’s most loved significant building. If you are able to make a **donation toward the completion of these projects** please do it now is at all possible not just for ourselves and loved ones but for the people of Albury.

“Faith Reaching Out” is a wonderful St Matthews theme and evidenced by the growth in communicants at Riverwood and Murray Gardens and on Wednesday at 10.30 at St Matthews. Friday morning @ Riverwood is a time of fun and fellowship sharing communion and contemporary spiritual ideas reflecting on current events and it has been great to welcome new friends and residents. Similarly the service in Ned Monty’s room at Murray Gardens, that I like to call our “service@St Neds” is also growing and a real joy to be apart of.

Sharing communion and fellowship in people's homes, extending the fellowship of St Matthews is something we are very keen to develop, so if you are unable to come on Sundays or know of anyone who would like a visit or holy communion please contact the St Matthew's office.

The Governor is part of a most exciting Lenten line-up for St Matthews including Professor Geoffrey Blainey and the famous Australian Pianist and Christian thinker Geoffrey Lancaster

Watch the Grapevine and our website for details.

Congratulations to Doreen Widdison.

Fr Peter

New pavilion under construction south side of Church near P.O.



Riverwood residents at Communion service



Christmas Eve Bishop John & Gervase Inngkatji



Neal Gunn before he headed off to WA with work.



Vicki Chick, Lorraine Curnow, Robyne Slade and Catherine Tinlin congratulate Doreen Widdison (middle) on her O.A.M



St Ned's @ Murray Gardens residents at Communion Service



PARISH COUNCIL NEWS

Cooling in the Church By the time you read this the cooling system should be working. The unit which is in the Rectory back yard has to be fenced. The men on community service will be doing the fencing. Another gate will have to be installed so that the yard can be accessed.

Landscaping. As you will have noticed the stump from the Laurel Tree has been removed. At the meeting we decided that we needed another gazebo. It would be somewhere where people can sit & if its raining, morning tea could be served in it. Since the meeting Fr Peter & some of the councillors have looked at one which we hope will be installed by 1st March. More details about this somewhere else in this issue. Thank you to all the people who have donated plants, Parish Council would like a 'potted history' of the garden, so if you know anything that is of importance regarding any plants that have been donated or given in memory of someone, when they were planted, etc. please let a Councillor know.

Website Letters have been sent to suitable businesses asking if they would like to advertise on the web site. If you have any ideas as to how the website can be improved please forward them to the office or speak to Fr Peter.

Moving Font to Lady Chapel The Lady Chapel would become a baptistery. A faculty will be needed. The men from Community Services would be asked to move the font. The Chapel would still be used as a communion station & a play area for children. The final position will be decided after parishioners have had a chance to have their say.

Albury's Own Chapel. The South Transept would become a chapel for Albury' Own, the Services & Forces. The Grenadier Guards have indicated they would like to lay up their colours in St Matthews.

Anglican food room 19 hampers were distributed in November, 23 in December as well as 187 Christmas hampers.

Finances No 1 a/c Balance at 4th Jan **\$23,144.38** less cheques to be paid **\$2,960.85**
Balance in No 2 a/c at 4th Jan, **\$39,007.79** less cheques to be paid **\$352.86**

Wedding Fees are now \$1,000.

Lenten Talks Marie Bashir the NSW Governor will be speaking on Sunday 4th March when there only be one service at 9 am. She is interested in young people & their capacity to change things. School captains will be invited to attend the Sunday service. She will be speaking again on Tuesday 6th March in the evening. Professor Geoffrey Blainey will be speaking the following Sunday 11th March at 9 am. Fr Peter is hoping to show films on the Lenten theme on Tuesday nights.

Noticeboard. Parish Council is looking at ways we can revamp our notice board. Brochures for the church are to be put in the Visitors centre. Fr Peter is looking at preparing a children's guide for the church.

Kaye Kennedy , Secretary

MOTHER'S UNION sponsoring Morning Tea For Trinity Kinda Class parents

Mother's Union sponsored a morning tea for Kinda parents at Trinity School on Monday 30th January. Contrary to other years, the morning tea was well attended by about 50 parents and teachers, and the Principal gave a short speech of welcome to the new parents. Children's church info was verbally given to the parents.'
Stephanie (President) and Julie, M.U. members.

Friendly message from the EDITOR

Just a reminder that the subscription of \$15 p.a. is now due or the printed 2012 subscription of the Grapevine.

Please could you drop your subs. money into the office at your earliest convenience

Julie Scott Editor

P A R I S H A. G. M.
SUNDAY 18TH MARCH

AFTER THE SERVICE ,WHICH WILL BE AT 9 AM !

**PLEASE EMAIL YOUR REPORT OR DROP YOUR HAND-WRITTEN
REPORT IN TO THE OFFICE BY THE
18TH FEBRUARY**

Thank you to those of you have sent your reports in

Kaye

CHURCH RUBBISH BINS.

Please when empty the rubbish bins would you please put papers, empty bottles, cardboard in the Yellow Recycling Bin. If any foreign items are put in it means it cannot be recycled. Please try & fill one yellow bin before using another.

Dead flowers & pruning's to be put in the Green Bin. Remember if anything else gets put in this bin it will put with general rubbish & not used as green waste.

General waste goes in the Red Lidded Bin.

*If in doubt where something should go put it in the red lidded bin.
Please try & fill one of these bins before using another.*



I knows at times it can be hard but It will make it easier for the person putting the bins out!



Children's Church Dec. 2011, & January 2012

Christmas children's church was a Eucharist, where all the children were involved. The 20 Children took part in a practice for the nativity play to be held on Christmas Eve. There was a "Jesus Birthday party" after, with cold cordial, tea/coffee, cup cakes, Christmas craft sheet, and candy canes.

The theme for January Children's Church was 'Jesus saves the Party'- the children's church 'take' on the parable of the 'Marriage at Cana'! Father Peter spoke about parties and demonstrated with party poppers and balloon, how they are enjoyable, but how embarrassing for people running a party to run out of drink when people are very thirsty! Jesus was there to help the people running the party, and to also talk generally about people's thirst for Jesus' help when life gets difficult.

There were 12 children there, who enjoyed the action songs, and were intently listening to the message.

The children coloured in a sheet about the story, while Fr. Peter spoke to the adult congregation about the parable. Some of the older children carried the crosses for the procession and singing of 'All things Bright and Beautiful', with various musical instruments, and later all had cold drinks, biscuits, and icypoles, which Fr. Peter produced!

Julie Soott, Children's Church Spokesperson for Mother's Union.

MONTHLY OFFERINGS

<u>Week</u>	<u>Planned Giving</u>	<u>Open Plate</u>	<u>Baptisms</u>
6 November	\$997.00	\$417.45	\$72.15
13 November	\$882.00	\$489.40	\$185.00
20 November	\$1104.00	\$628.60	
27 November	\$1504.00	\$551.95	\$110

<u>Week</u>	<u>Planned Giving</u>	<u>Open Plate</u>	<u>Baptisms</u>
4 December	\$1044.00	\$680.10	\$
11 December	\$1166.00	\$1792.20	\$
18 December	\$2021.20	\$616.95	\$65.45
24/25 December	\$1110.00	\$3223.35	\$

*Offerings do not take into account any payments that are paid directly into the Bank.
November Evensong - \$174.00; December Evensong \$53.30*

**Direct Deposit into St Matthews Bank Account is available
for those wishing to make a donation or for your planned giving.**

Parish Banking Details.

Bank National Australia Bank (NAB) Account Name St Matthew's Church Albury No 1 Account
BSB 082 406 Account no. 17053 2923



EVENING GROUP NEWS

As we emerge from the Christmas hibernation and recover from a busy year, I would like to wish you all a very happy and healthy New Year.

Meetings are held at 7.30 pm on the third Thursday in each month in the St Pat's Village in Olive Street. New members will always be warmly welcomed, so please feel free to join us at a meeting and see if you would like to become part of our group. Margaret may be contacted on 6062 3512 or Pam on 6021 3571 for further information.

Our planning meeting was held on January 18, ably led by new president Margaret Shearer. A variety of guest speakers and activities were organized for the year, and following the very successful card party in 2010 it was decided to hold another in May 2012. Watch this space for a date to put in your diaries.

Pam Thorman, Secretary

NEWS FROM THE BELLTOWER

We now have a very committed team of 15 ringers who are so keen that they are prepared to continue weekly practices throughout the summer heat. However, it did become too much for us on one occasion this month when even the hardy declined to ring.

Following last year's successful six-bell ringing competition for country towers, "The Kookaburra Cup", we have made the decision to participate in the eight-bell competition at the end of February. We found that competing in the competition to be very good for our striking and team work and hope to field two teams on this occasion.



The newer ringers are now all sufficiently skilled to be able to ring at all occasions and I must congratulate the trainers ably led by Jim Jefferies, and the ringers themselves for their dedication.

Finally, I must thank Fr Peter for the welcome cold refreshment last Tuesday evening. You may have saved some lives!

We trust you enjoy our contribution to the Sunday services.

Pam Thorman Tower Captain

PANCAKE NIGHT

**Come and enjoy some yummy pancakes
and fellowship,**

Tuesday 21st February

from 5pm in church grounds Hot & cold fillings

(Please bring last year's palm cross to burn for Ash Wed).

\$2 per person Sponsored by Mother's Union

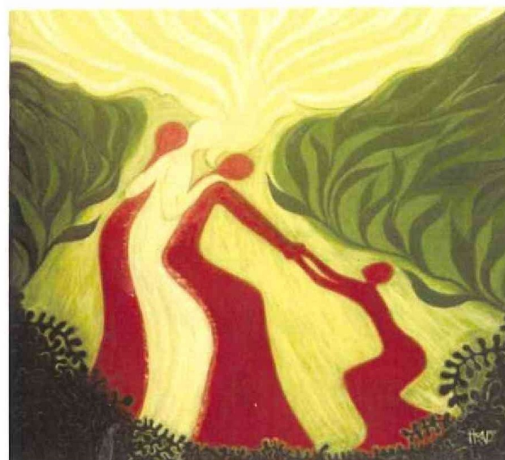




WORLD DAY OF PRAYER

'Let justice prevail'

Prepared by WDP Committee Malaysia



Friday 2nd March 2012

Time

10.00am

Place

**St Matthew's Albury
520 Kiewa Street**

PLEASE JOIN US

1898—CHRISTMAS in ST. MATTHEW'S.
Cutting taken from the Wednesday 28th
December 1898 'Albury Daily News' or
'Albury Herald'

CHRISTMAS IN ST. MATTHEW'S.

The interior of St. Matthew's was tastefully, though at this part of summer it could hardly be profusely, decorated in honor of Christmas time. There were four services on Christmas Day. The first was a celebration of the Holy Communion at 8 a.m. A member who had been a communicant for years said that he had never seen so many at the Communion at one time in the church before. The 11 a.m. service was largely attended; the singing was beautiful throughout, and the number who partook of their Christmas Communion was large. On such occasions it would be advisable that both the parish clergymen should be present, so that the time necessary for distribution of the consecrated elements should not be unduly prolonged. The afternoon service for children was not well attended. After the close of evensong the congregation remained seated while the choir sang some Christmas carols. The offerings during the day (about £12) are for the fund established years ago to aid clergymen in making some provision, by means of life assurance, so that at their death their widows and orphans may not quite go to the wall. In the morning, and again at evensong, Canon Spencer spoke from Micah vi., "But thou, Bethlehem-Ephrathah, which art little to be among the thousands of Judah, out of thee shall one come forth unto me that is to be ruler in Israel, whose goings forth are from of old, from everlasting." the morning the

...e about Christ's ... with
days of eternity as God, and of his
sing forth, in the nature of man,
Ephrathah. In the evening he dealt
with two questions about the wonderful being
in whom two natures, the Divine and human,
are joined together, never to be divided.
1. Who is He? 2. What did He go forth to
do? As to the first question, he said that
Christ was more than a good man, more than
a prophet, more than the mightiest prophet,
commissioned to reveal more secret and
deeper things of God than he; higher
than the Angels, who are His ministers, and
worship Him; infinitely higher than the
noblest created being such as Arnold de-
scribed in his "Light of the World." He is
the Son of the living God, very God of very
God, begotten not made, being of one sub-
stance with the Father. He is one person,
perfect man, yet Almighty God. As to the
second question, Micah calls him "Ruler."
As such He guides our feet into the way of
peace; He is captain of our Salvation and
leads us in our fight with the world, the
flesh, and the devil, and fights for us; He is
our shepherd, who leads us gently to pleasant
pastures, there to feed and nourish our souls
to eternal life. It is not often that in Albury
Christmas can be so well kept as it was this
year at St. Matthew's.

Amelia in the manger patting Nat the lamb



Choir at Lessons and Carols service



Candle lights up Lessons and Carols service



At the Living Nativity, Carols by Candlelight



Children's Christmas Eve 6.30 service



The Epiphany Procession with Alpaca



COMMUNION TAKEN TO MERCY HOSPITAL PATIENTS

Last November, a small team began an important outreach to patients at the Mercy Hospital (Mercy Health). Under the supervision of Rev. Maureen Beattie, in her role of Pastoral Care Associate in the hospital, we are taking Holy Communion to Anglicans in their rooms on a weekly basis. Team members collect consecrated host from St. Matthews which has been reserved for the sick from the 10.30 Wednesday service. This expansion into the community we serve has been very well received and patients have enjoyed the opportunity of having a chat as well.



We are visiting all three floors at the hospital, with Rev. Maureen having a prepared list of those who have indicated their desire to participate in receiving the sacrament.

Sr. Grace Sharon, during her time spent with Rev. Maureen was instrumental in and committed to seeing this to fruition, so it is a fitting legacy of Sr. Grace's time with us.

Please pray for this ministry, for those who receive the sacrament and for those who volunteer to provide this outreach.

Carol Read, Team Leader

Pastoral Care News

As we consider how to enhance our pastoral services, we are planning *A Service of Remembering*, to be held on Friday 30th March 2012. We will be sending invitations to those who have chosen to hold funeral services at St Matthews in the past year and who would like to honour their loved ones. An open invitation is extended to the wider community to be part of this special time. Finalised details will be in the following issue of the Grapevine.

*Grieving allows us to heal, and as we do,
we remember with love rather than pain.*



We are also offering Bereavement Support and Rev'd Heather Matthews can be contacted through the office, if you would like a home visit, a chat over a coffee, or just a caring, listening ear.

*Rev'd Heather
Pastoral Care Team*

H U M O U R

It Doesn't Hurt to Have a Little Biblical Humor



Q. What kind of man was Boaz before he married Ruth?

A. Ruthless.

Q. What do they call pastors in Germany?

A. German Shepherds.

Q. Who was the greatest financier in the Bible?

A. Noah. He was floating his stock while everyone else was in liquidation.

Q. Who was the greatest female financier in the Bible?

A. Pharaoh's daughter. She went down to the bank of the Nile and drew out a little prophet.

Q. What kind of motor vehicles are in the Bible?

A. David's Triumph was heard throughout the land. Also probably a Honda, because the apostles were all in one Accord.

Q. Who was the greatest comedian in the Bible?

A. Samson. He brought the house down.

Q. What excuse did Adam give to his children as to why he no longer lived in Eden?

A. Your mother ate us out of house and home.

Q. Which servant of God was the most flagrant lawbreaker in the Bible?

A. Moses. He broke all 10 commandments at once.

Q. Which area of Palestine was especially wealthy?

A. The area around Jordan, The banks were always overflowing.

Q. Who is the greatest baby-sitter mentioned in the Bible?

A. David. He rocked Goliath to a very deep sleep.

Q. Which Bible character had no parents?

A. Joshua, son of Nun.

Q. Why didn't they play cards on the Ark?

A. Because Noah was standing on the deck.

PS. Did you know it's a sin for a woman to make coffee?

Yup, it's in the Bible

It says 'He-brews'

KEEP SMILING! GOD LOVES YOU BUNCHES AND BUNCHES!

ON THE RECORD

Baptisms

We welcome into Christ's family

4 December Imogen Valentine BOWNDS
Jackson Douglas CHARLTON
11 December Isaac John McMASTER
Mila Rose PERRY
16 December Grace Ruth SHIRLEY

22 January Lauren Renee MULLINS



Weddings

We congratulate those joined together in Holy Matrimony

3 December Jai Leigh YOUNIE & Sian Louise ANDERSON
10 December Benjamin Charles MASON & Carissa NAIDOO

7 January Jason William McPHERSON & Sally Margaret WHITE



Funerals

We pray for those who have died and extend our sympathies to those who mourn

17 January Melissa Ann KILPATRICK





Bon Voyage to our very own SARAH WINNEL, head chorister, who leaves for the UK in March, in her quest to sit for the INTERNATIONAL GOLD AWARD which is the highest RSCM International Award.
She already holds the highest parish award in Australia– the 'Yellow ribbon'. We will miss hearing her beautiful voice in the choir, but wish her all the best in this challenging quest!

Fifield's Family Pharmacy

637 Dean Street

Albury NSW 2640

Phone 02 6021 3255

Fax 02 6021 4978

Open 7 Days

Mon-Fri. 8.30-6pm

Sat. 9am-4pm

Sun. 10am-4pm

**AE
MS**

**Albury Engineering
and Mower Service**

**Pty Ltd
Dean Quinlivan**

**For all your garden power
equipment sales, service
and repairs**

**208 Borella Road
ALBURY
NSW 2640**

PH: 0260411444

FAX: 0260232338

EMAIL: accounts@alburyengineering.com.au



Lester & Son
FUNERAL DIRECTORS

A tradition of personal, professional care since 1907



Darren Eddy & Andrew Harbick

Albury: 6040 5066

Wodonga: 6059 4567

Tallangatta: 6071 2541

359 Wandong St, Albury

www.lesterandson.com.au

All Hours, All Areas • Pre-planned Funerals Available

COADY DAVENPORT
Optical

Specialising in Optical Fashion
Latest in Lens Technology
Competitively Priced
Optometrist available for your Consultation

Christopher Coady & Ken Davenport

**Telephone 6021 8322
Facsimile 6021 8324**

Centrepont Arcade
526 Olive Street, Albury

The difference is visible

Established 1983

Albury-Wodonga Real Estate

483 Macauley Street, Albury

Specialists in:

**Residential and Rural Sales
Property Management and
Strata Management**

Ph: 6021 2217 Fax: 6021 3859

Visit our website:

alburywodongarealestate.com.au

Email address:

awrealestate@hotmail.net.au

Licencee: Christine Nesbit



John Hossack
FUNERAL SERVICES

Always caring

❖ *Spacious Chapel*

❖ *Fully serviced Function Room*

❖ *Pre-arranged funeral plans*

435 Wilson Street, Albury,
NSW 2640

Ph: 6041 3855

www.hossackfunerals.com.au



Sandy's Dance Studio

Tap • Jazz • Contemporary • Hip Hop • Irish

SANDY VAN DE STADT • DIRECTOR

49 Catherine Crescent, Lavington NSW 2641

PO Box 318, Lavington NSW 2641

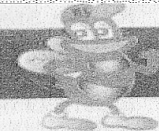
0400 303 614

(02) 6025 0399

foursq@bigpond.com



**Bee • Border • Burton
LOCKSMITHS**



Ph: (02) 6024 7755

Fax: (02) 6056 1591

45 High Street, Wodonga.

Ph: (02) 6040 9525

Fax: (02) 6040 9524

1088 Mate Street, Albury.

**0408 690 259
24 Hour Emergency**

SAFES • AUTOMOTIVE REPAIRS • STEEL GRILLS • RESTRICTED KEY SYSTEMS

block@dragnet.com.au

ST MATTHEW'S PARISH DIRECTORY

SERVICE TIMES

Weekdays

7.00 a.m. Morning Prayer

5:00 p.m. Evening Prayer

Tuesday

8:00 a.m. Holy Eucharist

Wednesday

10:30 a.m. Eucharist

Thursday

Friday

10.00 a.m. Eucharist at Riverwood (except 1st Friday). All welcome

Sunday

8:30 a.m. Sung Eucharist

10:00 a.m. Family Service—(Children's Church 3rd Sunday every month)

9.00 am 5th Sunday of every month—One Service Only—

Matins with Holy Communion

5.00 p.m. Evensong Only 1st Sunday of every month

PARISH CLERGY:

Rector:	Peter Macleod-Miller	Ph: 6021 3022
Hon. Associate Priest:	Fr. Bill Ginns	Ph: 6025 0556
Associate Priest:	Fr Alan Kelb OAM	Ph. 0418 464 053
Hospital Chaplain:	Rev'd Arthur Martin	Ph: 0414 575 875

PARISH OFFICE:

Rector's Secretary: Deb Davenport

Open Monday to Friday 8.30 a.m. to 12.30 p.m.

Phone: 6021 3022

Fax: 6041 3149

e-mail: office@stmatthews.com.au Website: www.stmatthews.com.au

PARISH COUNCIL:

Councillors

Fr Peter MacLeod-Miller—Chairman	Angie Barney	Cate Austen
Victoria Chick—Rector's Warden	Angela Braybrooks	Cathy Carden
Ken Curnow—Warden	Mark Carden	Ray Feitz
Ken Davenport—Warden & Treasurer	Carol Read	Robyne Slade
Kaye Kennedy—Secretary	Neal Gunn	Robyn Gibbs
	Stephanie Stephenson	Robyne Slade

GRAPEVINE EDITOR: Julie Scott Ph. 6021 8897
Email: jazzzer43@bigpond.net.au

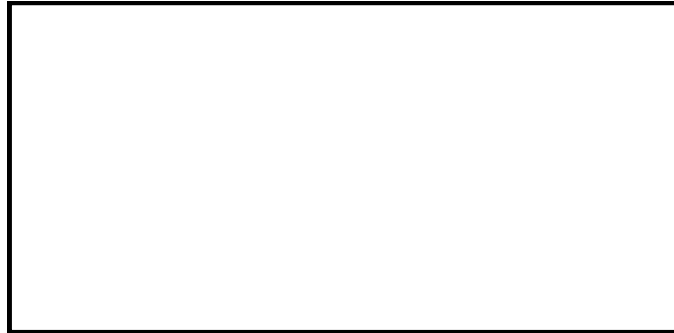
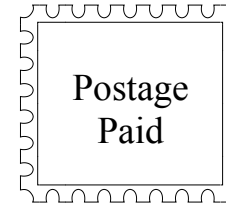
ST. MATTHEW'S GRAPEVINE

PARISH OF ALBURY

If undeliverable, please return to:

St. Matthew's Church

PO Box 682, Albury. NSW. 2640.



DATE: FEBRUARY 2012

