

# ST MATTHEW'S GRAPEVINE



**PARISH OF ALBURY**

*In the heart of Albury  
Welcomes all people*

**SEPTEMBER 2018**

**Fr Peter writes :**  
***Dear People of St Matthew's***

*Dear Lord and Father of mankind,  
Forgive our foolish ways!  
Reclothe us in our rightful mind,  
In purer lives Thy service find,  
In deeper reverence, praise.*

*In simple trust like theirs who  
heard  
Beside the Syrian sea  
The gracious calling of the Lord,  
Let us, like them, without a word  
rise up and follow thee.*  
(John G. Whittier 1807-92)



These are days of great change -in climate, politics and faith. The American Quaker poet John Greenleaf Whittier was a founding member of the liberal party (or Whigs) brought up on a farm, became a journalist, suffered political defeat but continued to work to protect minorities against social economic and intellectual slavery and worked to abolish the system of slavery which fuelled the economic fortunes of others. He was deeply committed to actions rather than slogans in government, church and society his other words resonate today.

*O Brother Man, fold to thy heart thy brother:  
Where pity dwells, the peace of God is there;  
To worship rightly is to love each other,  
Each smile a hymn, each kindly word a prayer.*

Political instability, drought and the plight of refugees and finding our spiritual feet in rapidly changing circumstances are strangely common themes in Australia and the United Kingdom.

I recently had the pleasure (and not just saying it), of spending time with Jeffrey John the Dean of St Albans, the new Dean of St Edmundsbury Joe Hawes, Mark Oakley just announced as the new Dean of S. John's College Cambridge (and probably the most progressive voice in the Church of England) and human rights activist Peter Tatchell, recently detained in Russia but when I saw him; enjoying the coffee at St Martins in the Fields, like St Matthews Albury noted for its commitment to issues of homelessness, justice, social inclusion and fine music.

There are so many similarities in the challenges that are faced in rebooting our spiritual navigation system so that we can authentically serve our community rather than merely struggle for existence.

There are many community themes in which we continue to make a contribution and some new ground to explore in partnership with others.

Many will know Nicole Stevens from the farmers market or multiculturally through a food and community conversation group she ran at the library - we are so glad to host her and Darren Eddy from Lester's with Helen McGowan,

Solicitor, to explore some end of life Q&A 's and a very accessible easy landing on what can be a challenging runway on end of life issues, as we go on these issues impact on all of us, our loved ones and neighbours and the information could be a "real life saver" to help someone out at a difficult time. All invited to Dying to know you - Death Café on Thursday 30th August from 10am-12noon at St Matthew's Church in the rectory hosted by Nicole Stevens

Evensong with our wonderful choir in the best Anglican tradition at 5pm - on 2nd September

St Matthews music brings us.

Tunes on Tuesday - 11th September with James Flores / Paul Tasker / Benedict Wilson / Marjorie Glanville on the organ and on 25th September with Grace Trebley & Aylish Jorgensen on Clarinet and Cello.

Farmers in Focus will be a theme as we come "Back to st Matthews" for our Patronal Festival - St Matthews Day celebrated on Sunday 23rd September at 9am service

Evening Group -are hold a Garden Walk with Robyn Gibbs on Thursday 27<sup>th</sup> September at 10am. Entry is \$10.00 includes a Devonshire morning tea. Lucky gate prize.

Our best ever Fete - 6th October - everyone needed to get on board for this major fundraiser and community event including Albury's famous pet show and blessing with fun for all the family.

Feast of St Francis - service at 9am on Sunday 7th October. Guest speaker Sussan Ley. Invite farmers, animals and bring your pets.

As the civic church of the region we are proud to help our community remember the fallen particularly this year, the centenary of the armistice. Remembrance Day - Sunday 11th November there will be a short service at 9am followed by the main Remembrance Day service at 10.30am.

Please book early for our very own Albury Chamber Music Festival - from 16th to 18th November. After the knock out success of the launch with tenor Shanul Sharma earlier in the year we are pleased to announce the return to St Matthews of the Governor of NSW and his wife for the opening concert and vice regal reception; last year tickets sold out and with music lovers from Sydney and Melbourne helping to make the ACMF an important cultural event it is truly not to be missed.

*Fr Peter*



Angela & Edgar Braybrooks

## **PARISH COUNCIL NEWS**

### **Christmas Tree Festival,**

It has been decided not to hold the festival this year. It is a lot of work for a few people and after expenses not much money is made for the church.

**Book Fair \$635** was made on the sale of the books. Thank you to everyone who donated books, setup and took down for the fair, the helpers, the embroidery group, and the bell ringers who ran the BBQ. After the fair a lot of the old books were culled and these were taken to the recycling depot.

**Advertising sign.** Before we go ahead with the sign a DA has to be submitted to Albury City

**Gazebo.** This is being made by the students of Beechworth Secondary College. The gazebo will be put on the rectory driveway and is to be opened by the NSW Governor in November.  
Before it can be erected a DA has to be submitted to Albury City.

**Choir Loft security.** The doors are on but we are waiting for Border Locksmith to put the universal locks on.

**Fete.** This will be held on 6<sup>th</sup> October. We need to make it a success. Please if you can help in any way please let Christine Nesbit know.

**Pastoral Care.** This team is doing a great job. They have been delivering comfort rugs to the elderly and sick which have very kindly been knitted or crocheted by members of the public.

**Anglican Food Room** 23 hampers, 137 meals and 206 drinks were given out in July.

**OP Shop** The takings for the op shop were \$422.50 plus \$41.50 from Jack's rags

*Kaye Kennedy* **Secretary**



### **Evening Group News**

Please come to our Garden Walk with Robyn Gibbs. Also enjoy a Devonshire Morning Tea at 10am on Thursday 27th September. *Entry-\$10.00. Lucky Gate Prize.*

*Margaret Shearer President*



**Dying to Know Day Dying to Know Day Dying to Know Day Dying to Know**

### **Death Café: *What to know before you go?***

**The Rectory, St Mathews Church**

**Kiewa St, Albury**

**Thursday August 30<sup>th</sup>, 2018**

**10am – 12 noon**

**Gold coin donation**

**Does your family know your wishes?**

**Come along for a cuppa, cake and chat**



**For further information, contact Nicole, End of Life Doula**

**e: [nicole@steppingbeyond.com.au](mailto:nicole@steppingbeyond.com.au) M: 0428171272**

**Joyfully supported by Breaking New Ground Learning & Kookaburra BnB & Farm Stay**



## **Kindness/comfort rugs:**

A very big 'Thank you' to all who made and donated a kindness rug to bring comfort to others. These are being distributed. They have been warmly received and people are so thankful for your kindness.

If you are still making a knee rug or would like to make one and donate they will be greatly appreciated.

***Thank you.***

***The Pastoral Care Team.***



MU Celebrates '0' birthdays for members: Barbara Hoodless (70), Kaye Kennedy (70) and Noela White (90)



# **Children's Church in August**

This month is celebrated as our 18th birthday.! Reverend Catherine will be taking the service, and the theme is 'Come as you are' - Jesus welcomes us all just as we are,- and she will have an entertaining message on this subject!. We will be having party food, and will sing 'Happy Birthday' and we hope there will be plenty of people to participate! Tom Summerfield will be our musician. We thank all our helpers, as usual, and we hope it will be a happy and fun occasion!

*Julie Scott*

*Children's church spokesperson for M.U. Albury.*



**FETE**  
8.00 am

**monster  
raffle**

**books**



**plants**

**music**

**craft  
jewellery**

# PET SHOW

**St Matthew's Fair on the Square**

**Saturday 6 October**

QEH Square at the back of St Matthew's Church

**Pet Show—10.00 am**  
**For all Creatures Great & Small**

Come and bring your Pets  
and Photos for the Pet Show

Many categories including Best Dressed  
Trophies : Medals & Prizes to be won

Free Vet checks

Entry fee: \$10 per animal covers 16 categories  
+ special entry gift

Dogs judged separately to other animals

**1 metre high Trophy for Champion Pet**  
**Trophies and prizes for Photo Competition**

Have your beloved pet blessed by  
The Venerable Peter MacLeod-Miller  
Archdeacon of the Hume &  
Rector of St Matthew's

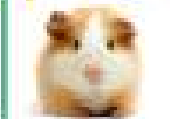
All dogs must be on leashes and  
other animals in secure cages

**Fete 8.00 am-1.00 pm**

**Live Entertainment from  
Community Groups**

**bananas**

**donuts  
preserves**



**toys**

**BBQ**

**mushrooms**

**cakes**

**drinks**





Fr Peter with Dean of St Albans Jeffrey John



Dean of Bury St Edmunds Joe Hawes & Fr Peter



Fr Peter & Mark Oakley Dean of St John's College Cambridge



Peter Tatchell, Fr Peter and John Hall



Cathedral Bury St Edmunds

# Welcome to your local church...

We extend a special welcome to all who are single married, divorced, gay, filthy rich or dirt poor. Those who love titles and those who want to be here anon. We welcome you if you can sing like a chorister or you can't sing at all. You're welcome if you're just browsing, just woke up, or just got out of jail. We don't care if you're more Catholic than the Pope or haven't been to church since Sandra's wedding, or if you've never been to church before.

We welcome those who are over sixty but have not grown up yet, and teenagers who are growing up too fast. We welcome single parents, gay parents, all parents, starving artists, tree-huggers, latte-sippers, vegetarians, junk-food eaters. We welcome those who are in recovery or still addicted. We welcome those who are having problems and down in the dumps and those who don't like "organized religion" (that's most of us!)

If you blew all your collection money before you arrived, you're welcome here.

We offer a welcome to those who think the earth is flat, work too hard, don't work, can't spell, or because Grandma dragged you along with her today.

We welcome those who are inked, pierced or both. We offer a welcome to those who could really use a prayer right now, had religion shoved down their throat or got lost in traffic and ended up here by mistake. We welcome tourists, seekers and doubters, bleeding hearts... and YOU!

St Matthew's Church Albury invites YOU to journey with us...

**whatever, whoever, whenever** – journey with us!

## **FOR THE KIDS -**

**Q. Why did the golfer wear 2 pairs of pants?**

**A. In case he got a hole in one!**

**Q. When is a baby like a basket baller?**

**A. When he/she dribbles.**

**Q. Which candle burns longer– a red or a green one?**

**A. Neither, they both burn shorter!**

**Q. Have you heard the joke about the garbage truck?**

**A. I'd better not tell you – it's a load of rubbish!**



# **H U M O U R**

When fish are in schools, they sometimes take debate.

.. A thief who stole a calendar got twelve months.

.. The batteries were given out free of charge.

.. A dentist and a manicurist married. They fought tooth and nail.

.. A will is a dead giveaway.

.. With her marriage, she got a new name and a dress.

.. A boiled egg is hard to beat.

.. When you've seen one shopping centre you've seen a mall.

.. Police were summoned to a daycare centre where a three-year-old was resisting a rest.

.. Did you hear about the fellow whose entire left side was cut off? He's all right now.

.. When a clock is hungry it goes back four seconds.

.. The guy who fell onto an upholstery machine is now fully recovered.

.. He had a photographic memory which was never developed.

.. When she saw her first strands of grey hair she thought she'd dye.

.. Acupuncture is a jab well done. That's the point of it.

**And the cream of the twisted crop:**

.. Those who get too big for their pants will be totally exposed in the end.

Always laugh when you can..it is cheap medicine.

And finally ---

Most people profess a love of humanity -

**It's the person who lives next door they can't stand!**

**No one ever ruined their eyesight by looking on the bright side!**

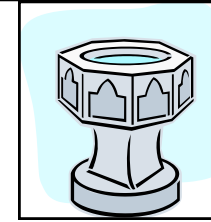


## **ON THE RECORD**

### *Baptisms*

*We welcome into Christ's family*

29 July Maggie Anne DANIEL  
12 August Adalynn May HUTCHINSON



### *Weddings*

*We congratulate those joined together in Holy Matrimony*

No Weddings



### *Funerals*

*We pray for those who have died and extend our sympathies to those who mourn*

20 August Laurence James JOHNSTON



### *Years Mind – September*

*We pray for those whose anniversary falls at this time*

Ray Walter MOREY (1<sup>st</sup>), Gertrude Emery KIRKWOOD (1<sup>st</sup>), Gordon William GRANT (2<sup>nd</sup>), 'Ned' Edward Rupert MONTE (5<sup>th</sup>), George Keith DURIE (6<sup>th</sup>), 'Dorrie' Doris Dardanelle SARROFF (7<sup>th</sup>), Noel Jack SNARE (7<sup>th</sup>), Patricia Leslie HARBERECHT (8<sup>th</sup>), Olive WRAGG (8<sup>th</sup>), Alexandra BROOKS (9<sup>th</sup>), 'Debbie' Deborah Mary Kailey NITSCHKI (9<sup>th</sup>), Laurie ANSTIS (10<sup>th</sup>), Dean Frederick WILSON (11<sup>th</sup>), Scotty SHEATHER (12<sup>th</sup>), Reginald Marcus James NORMAN (12<sup>th</sup>), James Etherington JACKSON (12<sup>th</sup>), Doug YENSCH (13<sup>th</sup>), 'Flo' Florence Angela BERRY (13<sup>th</sup>), June de TARCZYNSKI (14<sup>th</sup>), Percy EISENHAUER (15<sup>th</sup>), James William PURSS (15<sup>th</sup>), Daphne Caroline McKIBBON (15<sup>th</sup>), John Theodore MOLTMANN (17<sup>th</sup>), Anne Isobel DAVIES (18<sup>th</sup>), Jessica Catherine FIETZ (20<sup>th</sup>), George Austin ATKINSON (22<sup>nd</sup>), George de TARCZYNSKI (24<sup>th</sup>), Sarah HAY-HOW-REDDING (26<sup>th</sup>), Maxon Edward HODGSON (27<sup>th</sup>), Donald DRYSDALE (28<sup>th</sup>), Emily FORBES (28<sup>th</sup>), Ronald Hope BRINDLEY (29<sup>th</sup>), Matthew Craig BOWNDS (29<sup>th</sup>), Kenneth Frank CUSWORTH (30<sup>th</sup>), 'Mollie' Mary CHICK (30<sup>th</sup>), Irene Nancy NORTHAM (30<sup>th</sup>)



**TUNES  
ON  
TUESDAY**

**1.10pm-1.50pm  
Fortnightly**





**Looking for health  
advice and  
assistance?**  
OPEN 7 DAYS

**Ph. 6021 3255**  
**491 Townsend Street**



***Albury Engineering and  
Mower Service***

*PTY LTD*

**Dean Quinlivan**

For all your garden power equipment sales,  
service and repairs

208 Borella Road

Albury NSW 2640

Phone: 6041 1444 Fax 6023 2338

Email:

accounts@alburyengineering.com.au

**Lester & Son**  
Funeral Directors

*A tradition of personal, professional care since 1907*



*Andrew Harbick & Darren Eddy*

359 Wantigong St  
Albury  
6040 5066

49 Thomas Mitchell Dr  
Wodonga  
6056 1700

[www.lesterandson.com.au](http://www.lesterandson.com.au)

*All Hours • All Areas • Pre-planned Funerals Available*

**COADY DAVENPORT**  
***Optical***

Specialising in Optical Fashion  
Latest in Lens Technology  
Competitively Priced  
Optometrist available for your Consultation

**Christopher Coady & Ken Davenport**

**Telephone 6021 8322**  
**Facsimile 6021 8324**

Centrepont Arcade  
526 Olive Street, Albury

***The difference is visible***

**Established 1983**

## Albury-Wodonga Real Estate

483 Macauley Street, Albury

Specialists in:

**Residential and Rural Sales  
Property Management and  
Strata Management**

Ph: 6021 2217 Fax: 6021 3859

Visit our website:  
[alburywodongarealestate.com.au](http://alburywodongarealestate.com.au)

Email address:

[awrealestate@hotmail.net.au](mailto:awrealestate@hotmail.net.au)

Licencee: Christine Nesbit



- Fully serviced function room
- Spacious chapel
- Pre-arranged funeral plans
- Insurance products and funeral bonds

♦ Albury ♦ Holbrook ♦ Howlong  
♦ Corryong ♦ Beechworth  
♦ Myrtleford

**Ph: 02 6041 3855**

435 Wilson St, Albury

[www.hossackfunerals.com.au](http://www.hossackfunerals.com.au)



**Quantum**  
PRINT SERVICES PTY. LTD.

*For all your printing needs*

Business Cards • Letterheads • Design Service  
Brochures / Flyers • Full Colour Printing  
Annual Reports • Binding / Finishing *and much more*

**02 6040 3300**

49 Catherine Crescent, Lavington NSW 2641  
PO Box 318, Lavington NSW 2641  
Fax. 6040 8999 • E. [sales@quantumprinting.com.au](mailto:sales@quantumprinting.com.au)



**Bee • Border • Burton  
LOCKSMITHS**



Ph: (02) 6024 7755  
Fax: (02) 6056 1591  
45 High Street, Wodonga.

Ph: (02) 6040 9525  
Fax: (02) 6040 9524  
1013 Waugh Road, Albury.

**0408 690 259**  
**24 Hour Emergency**

SAFES • AUTOMOTIVE REPAIRS • STEEL GRILLS • RESTRICTED KEY SYSTEMS

[block@dragnet.com.au](mailto:block@dragnet.com.au)

# **ST MATTHEW'S PARISH DIRECTORY**

## **SERVICE TIMES**

### **TUESDAY**

8:00 am. Holy Eucharist

### **WEDNESDAY**

10:30 am. Eucharist

### **THURSDAY**

No services

### **FRIDAY**

10.00 am. Eucharist at Riverwood (except 2nd Friday). All welcome

### **SUNDAY**

9.00 am. Sung Eucharist

10:30 am. Children's Church 3rd Sunday every month

5.00 pm. Evensong (only 1st Sunday of every month)

## **PARISH CLERGY:**

<b>Rector:</b>	Peter Macleod-Miller	(02) 6021 3022
<b>Hon. Associate Priest:</b>	Fr. Bill Ginns	(02) 6025 0556
<b>Hospital Chaplain:</b>	Catherine Dawson	0466 324 435
<b>Pastoral Care—</b>	Annette Gorham	(02) 6021 3022

## **PARISH OFFICE:**

**Rector's Secretary:** Deb Davenport

**Office Hours:** Monday to Friday 8.30 a.m. to 12.30 p.m. Monday to Friday

**Phone:** 6021 3022

**Email:** [office@stmatthewsalbury.com](mailto:office@stmatthewsalbury.com) **Website:** [www.stmatthewsalbury.com](http://www.stmatthewsalbury.com)

**Facebook:** [St Matthew's Anglican Church Albury](#)

## **GRAPEVINE EDITOR—**

Julie Scott Ph. 6021 8897 Email: [jazzer43@bigpond.net.au](mailto:jazzer43@bigpond.net.au)

## **PARISH BANKING DETAILS—**

Bank: National Australia Bank (NAB) - Account Name: St Matthew's Church Albury No 1  
Account—BSB: 082 406 Account No: 17053 2923

## **PARISH COUNCIL:**

Fr Peter MacLeod-Miller—Chairman  
Victoria Chick—Rector's Warden  
Joe Nesbit—Warden  
Robyne Slade—Warden  
Mark Carden—Assistant Treasurer  
Kaye Kennedy—Secretary

## **Councillors**

Jane Atkinson	Mark Carden
Matthew-Paul Fowler	Robyn Gibbs
Martin Hendriks	Barbara Hoodless-
Jim Lee	Valerie Ratcliff
Carol Read	Kathy Sutherland
Stephanie Stephenson	

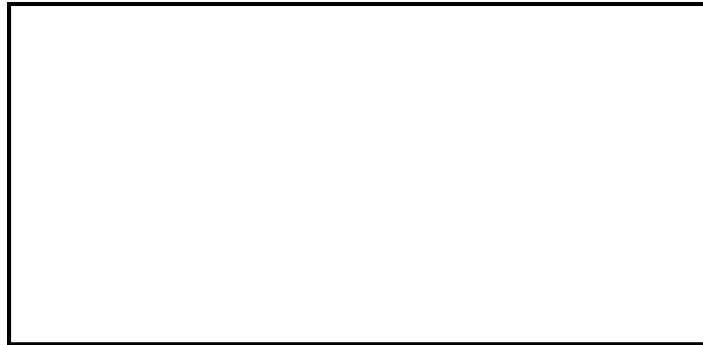
# ST. MATTHEW'S GRAPEVINE

*PARISH OF ALBURY*

If undeliverable, please return to:

**St. Matthew's Church**

**PO Box 682, Albury. NSW. 2640.**



**SEPTEMBER 2018**

